

# ALASKA DIVISION OF HOMELAND SECURITY & EMERGENCY MANAGEMENT

SITUATION REPORT 23-349 • December 15, 2023



Toll-Free 1.800.478.2337

Anchorage Area 907.428.7000

SEOC 907.428.7100

<p><b><u>SEOC Preparedness Level</u></b></p> <p>Level 2 – Heightened Awareness</p>	<p><a href="http://ready.alaska.gov">http://ready.alaska.gov</a></p>	<p><b><u>National Terrorism Advisory System:</u></b></p> <p><a href="#">Read the NTAS Bulletin here</a></p>
<p><b><u>Maritime Security (MARSEC)</u></b> Level:1- Minimum Appropriate Security Measures</p>	<p><b>WHO Novel Coronavirus Pandemic (COVID-19):</b> <a href="#">2019 Novel Coronavirus</a></p>	<p><b><u>Alaska Military Installation Force Protection Level:</u></b> FPCON Bravo</p>

(Significant changes from previous situation reports are red.)

**Significant Issues:**

**Wrangell Landside Disaster:**

The Joint Preliminary Damage Assessment (JPDA) team from State of Alaska and FEMA will be returning from City of Hydaburg, Coffman Cove, and the City of Craig to validate response costs and damage estimates for repairs from the landslide events in Wrangell and across Prince of Wales Island. This information will be used to determine if a request for federal assistance is warranted from the State of Alaska.

State Individual Assistance application hotline and website is open for Wrangell and Prince of Wales Island residents at <https://www.ready.alaska.gov/Recovery/IA> or by phone 1(844) 445-7131. The deadline to apply for State Individual Assistance is January 27, 2024.

**Quinhagak Power Outage:**

Local operators continue to make repairs to the power system, transformers, and utility lines within the Village of Quinhagak. SEOC has been fully engaged with a multiagency response to manage state declared disaster needs.

**State of Alaska Department of Health (DOH)**

The DOH stands ready to assist with all aspects of public health and in the event of a public health emergency, supported by the SEOC and other state departments as required. For current information, see:

<https://health.alaska.gov/dph/Pages/default.aspx>

<https://health.alaska.gov/dph/Emergency/Pages/prepared/default.aspx>

## NTAS Bulletin

The U.S. Department of Homeland Security issued an updated National Terrorism Advisory Bulletin on May 24, 2023. The current and expired bulletins can be viewed at the below link.

<https://www.dhs.gov/national-terrorism-advisory-system>

## Travel Alerts and Conditions

**Klondike Highway is closed due to heavy snowfall.**

For current driving conditions, dial 511 or visit: <https://511.alaska.gov/>

## Barry Arm Landslide / Tsunami Risk

For the latest information on the Barry Arm Landslide and Tsunami risk, click here:

<https://dggs.alaska.gov/hazards/barry-arm-landslide.html>

## Earthquakes

United States Geological Service (USGS) Earthquake Information: <http://earthquake.usgs.gov/>

National Tsunami Warning Center: <http://tsunami.gov/>

## Alaska Volcanoes

**Great Sitkin** Alert Level: **Watch** and Aviation Color Code: **Orange**

**Shishaldin** Alert Level: **Watch** and Aviation Color Code: **Orange**

**Trident** Alert Level: **Advisory** and Aviation Color Code: **Yellow**

For Alaska Volcano updates, go to: <https://www.avo.alaska.edu/>

## Air Quality Index (AQI) Advisories

For the most up to date Air Quality Index Advisories:

<http://dec.alaska.gov/Applications/Air/airtoolsweb/Home/Index>

## Spills of Oil and Hazardous Substances

The Alaska Division of Environmental Conservation (ADEC) Spill Prevention and Response page is located at:

<https://dec.alaska.gov/spar/>

## Alaska Cyber Security Information

State Employees may sign up for cyber security notifications and alerts at

<https://oit.alaska.gov/security>

Cybersecurity and Infrastructure Security Agency (CISA)-Cybersecurity Services and Tools:

[www.cisa.gov/free-cybersecurity-services-and-tools](http://www.cisa.gov/free-cybersecurity-services-and-tools)

## Avalanche Hazards:

Avalanche danger for Valdez is listed as **low below 1,500ft and moderate above 1500ft.**

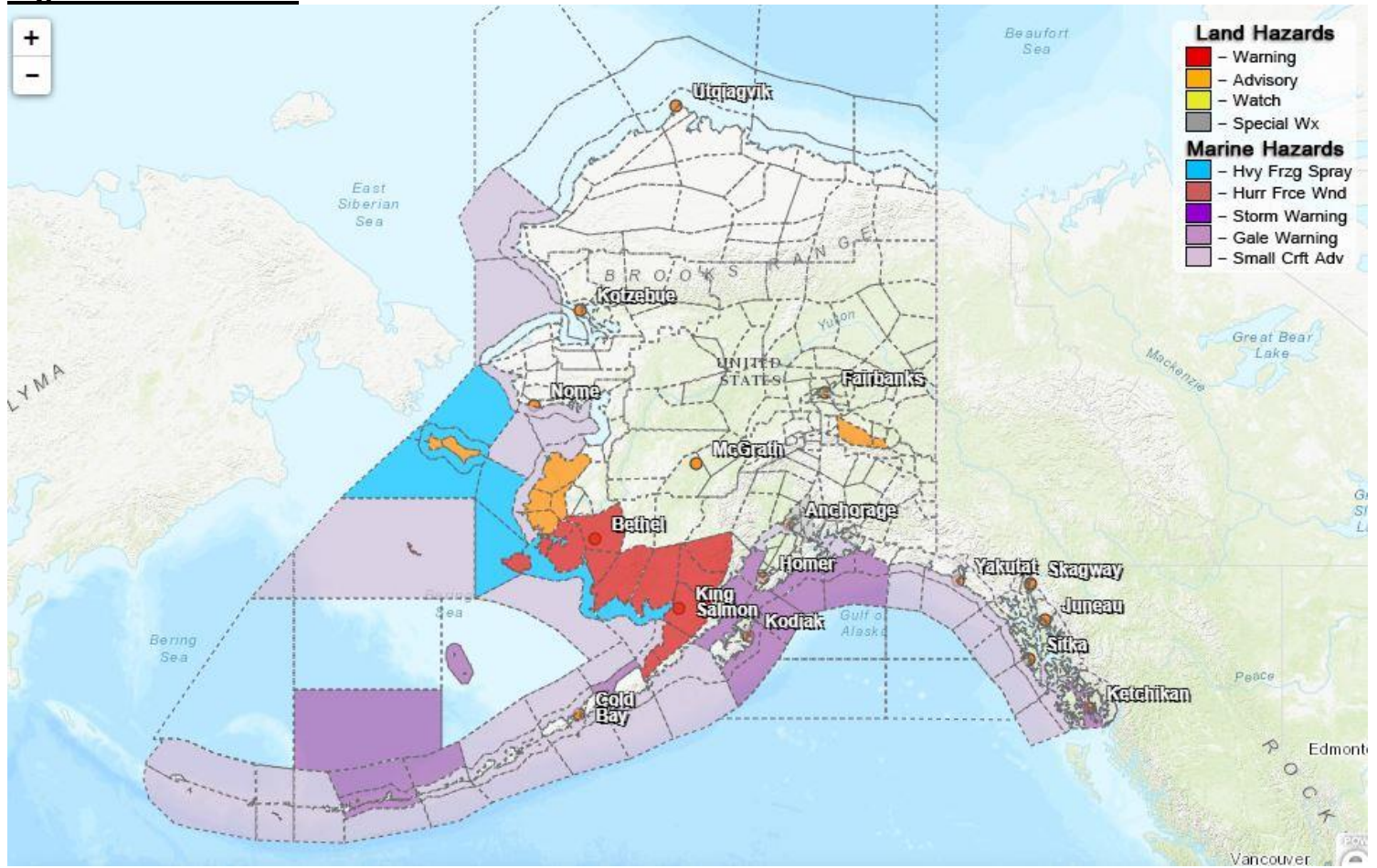
Avalanche danger for Cordova is low below 1,000ft, moderate above 1,000 ft.

Avalanche danger for Turnagain Pass is **moderate below 2,500ft and considerable above 2,500ft.**

Avalanche danger for Haines is **high at all altitude levels.**

For more information and the most current avalanche conditions go to <https://alaskasnow.org>

## Significant Weather:



### Special Weather Statement: Anchorage, Matanuska Valley

- Widespread snow for the Anchorage bowl and Matanuska Valley today until Friday evening.
- Gusts to 35 mph are possible, resulting in localized areas of blowing snow and reduced visibility, especially along the Seward Highway. Use extra caution when driving.
- Heavy snow fall during this time could result in reduced visibilities and may impact the evening commute. A total of 2 to 4 inches of snow is expected with totals up to 6 inches for the Anchorage Hillside and areas north of Wasilla and Palmer.

### Special Weather Statement: East Turnagain Arm

- Light snow will develop across Portage Valley this morning. The snow will become steadier by noon with gusty southeasterly winds likely through Turnagain Arm until Friday evening.
- Gusts to 35 mph are possible, resulting in localized areas of blowing snow and reduced visibility, especially along the Seward Highway with a total of 3 to 6 inches of snow is expected near Portage.

### Winter Weather Advisory: St. Lawrence Island

- Snow and blowing snow. Total snow accumulations of 2 inches. Winds gusting to 45 mph. Visibility of one-half mile or less at times until 3PM Friday.
- Travel may be very difficult. Large snow drifts could form. Areas of blowing snow could significantly reduce visibility, slow down and use caution while traveling.

### **Winter weather advisory: Yukon Delta Coast**

- Snow and blowing snow. Total snow accumulations of 2 inches. Winds gusting to 40 mph. Visibility of one-half mile or less at times.
- The most severe conditions are expected along the coast from Chevak to Scammon Bay.
- Travel may be very difficult. Large snow drifts could form. Areas of blowing snow could significantly reduce visibility. Slow down and use caution while traveling.

### **Winter Weather Advisory: Northeast Prince William Sound, and Thompson Pass**

- Blowing snow expected. Winds gusting as high as 40 mph. Visibility reduced to as low as one half mile till 9 PM this evening.
- Winds are expected to peak in intensity between noon and 4 pm before diminishing Thursday night.

### **Wind Advisory: Eastern Alaska Range North of Trims Camp**

- South winds 30 to 40 mph with gusts up to 50 mph until midnight Friday.
- Gusty winds could blow around unsecured objects. Areas of blowing and drifting snow.
- Use extra caution when driving, especially if operating a high-profile vehicle. Secure outdoor objects.

For more information and the most current weather, Watches / Warnings / Advisories go to:

<https://www.weather.gov/arh/>

**The Next Situation Report** will be **December 18, 2023**. A significant change in the situation or the threat level will prompt an interim report. This report is posted on the internet at

<https://ready.alaska.gov/sitrep>.

To register for email distribution, go to <http://list.state.ak.us/mailman/listinfo/dhsem.situation.report>. Direct questions regarding this report to the SEOC at 907-428-7100 or [seoc@alaska.gov](mailto:seoc@alaska.gov)